

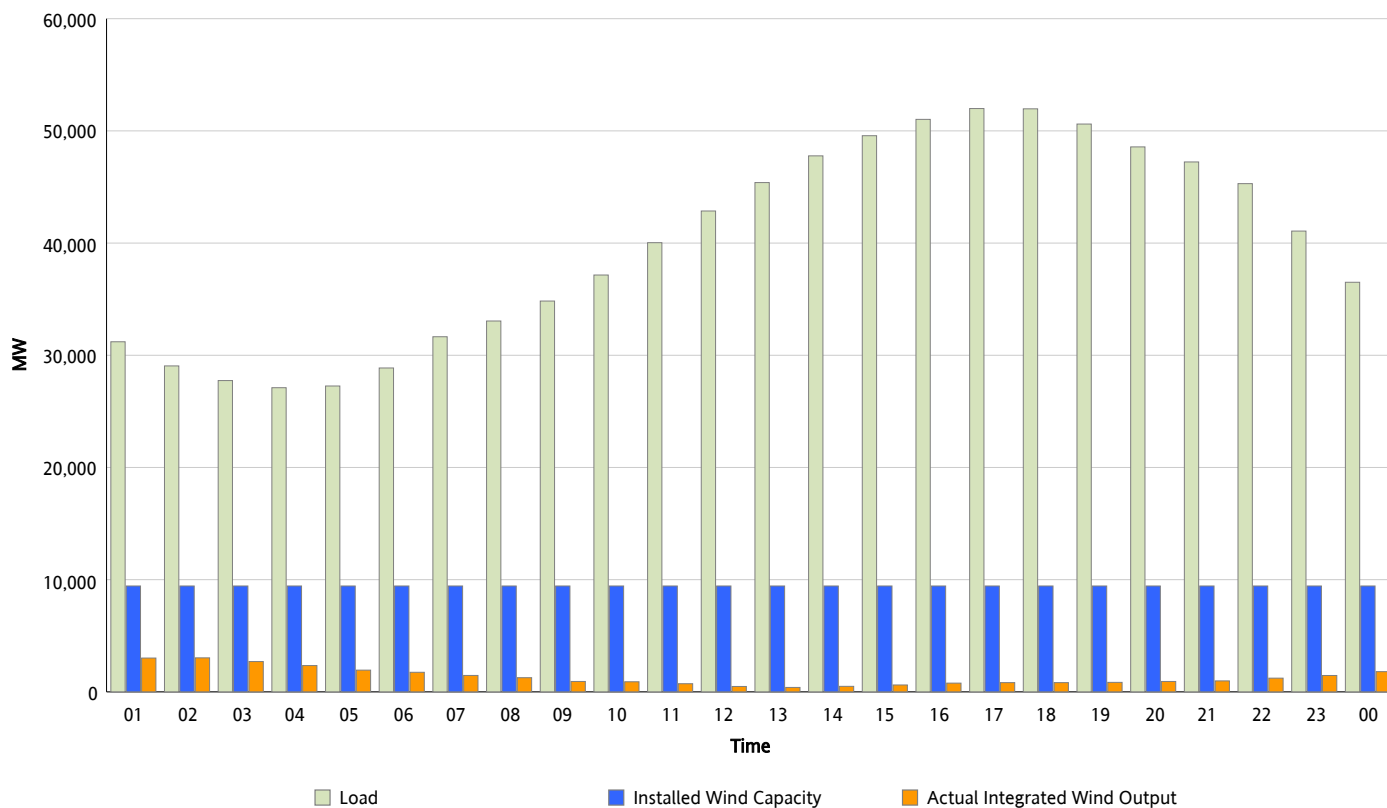


ERCOT Grid Operations

Wind Integration Report : 05/21/2012

Peak Load	51,992 MW
Load Peak Hour (HE)	17
Wind Over Peak	824 MW
Wind Record 04/13/12	7,925 MW
Max Wind Value*	3,162 MW
Wind Peak Time	00:55
Wind Integration %	10.56 %

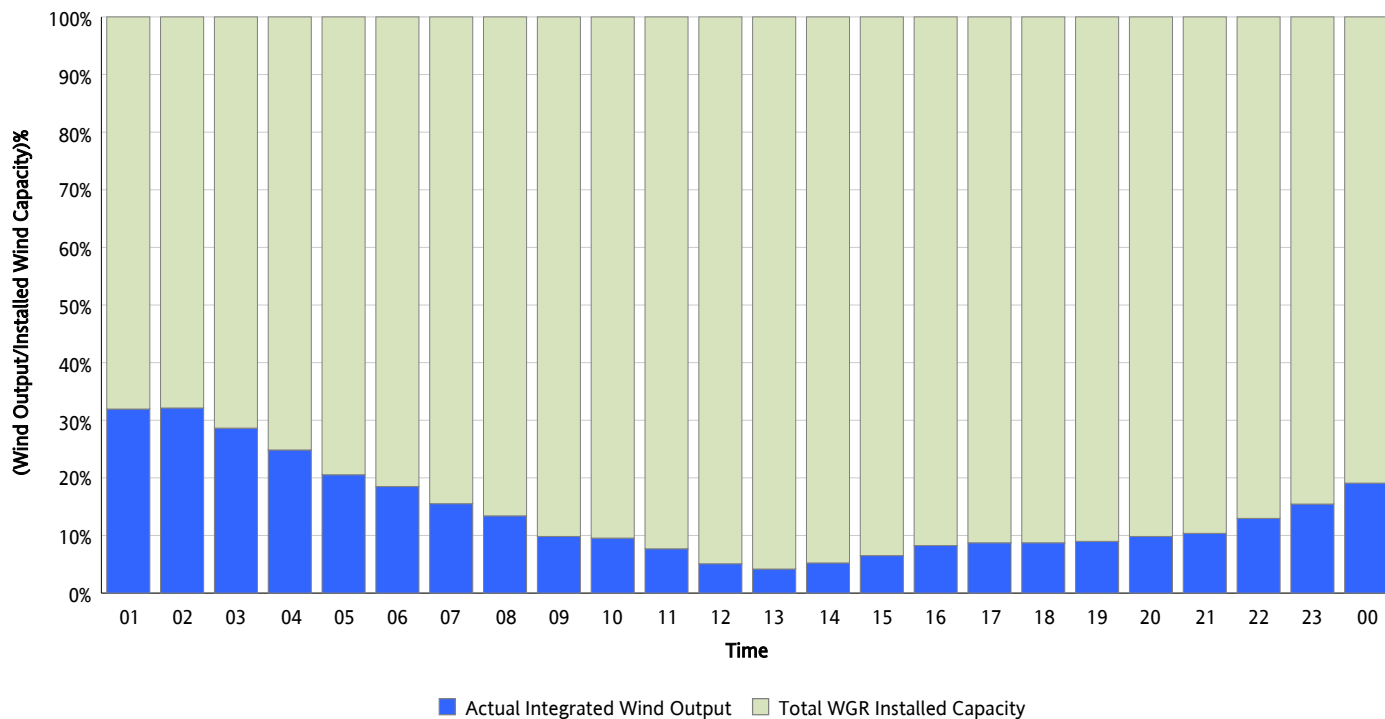
Hourly Average Actual Load vs. Actual Wind Output
05/21/2012



* Wind Record and Wind Max represent instantaneous values and the rest of the values are integrated over the hour

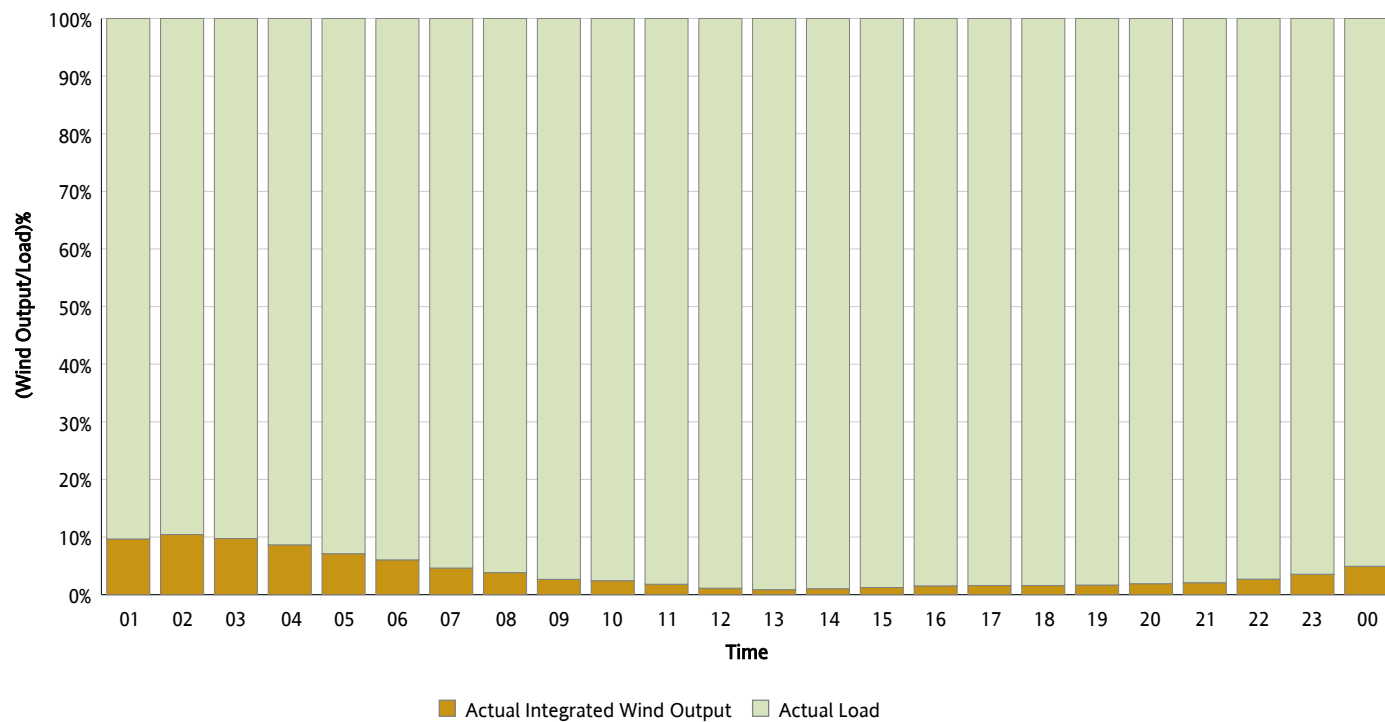
Actual Wind Output as a Percentage of the Total Installed Wind Capacity

05/21/2012



Actual Wind Output as a Percentage of the ERCOT Load

05/21/2012



ERCOT Load vs. Actual Wind Output

05/14/2012 - 05/21/2012

